

ATTACHMENT D

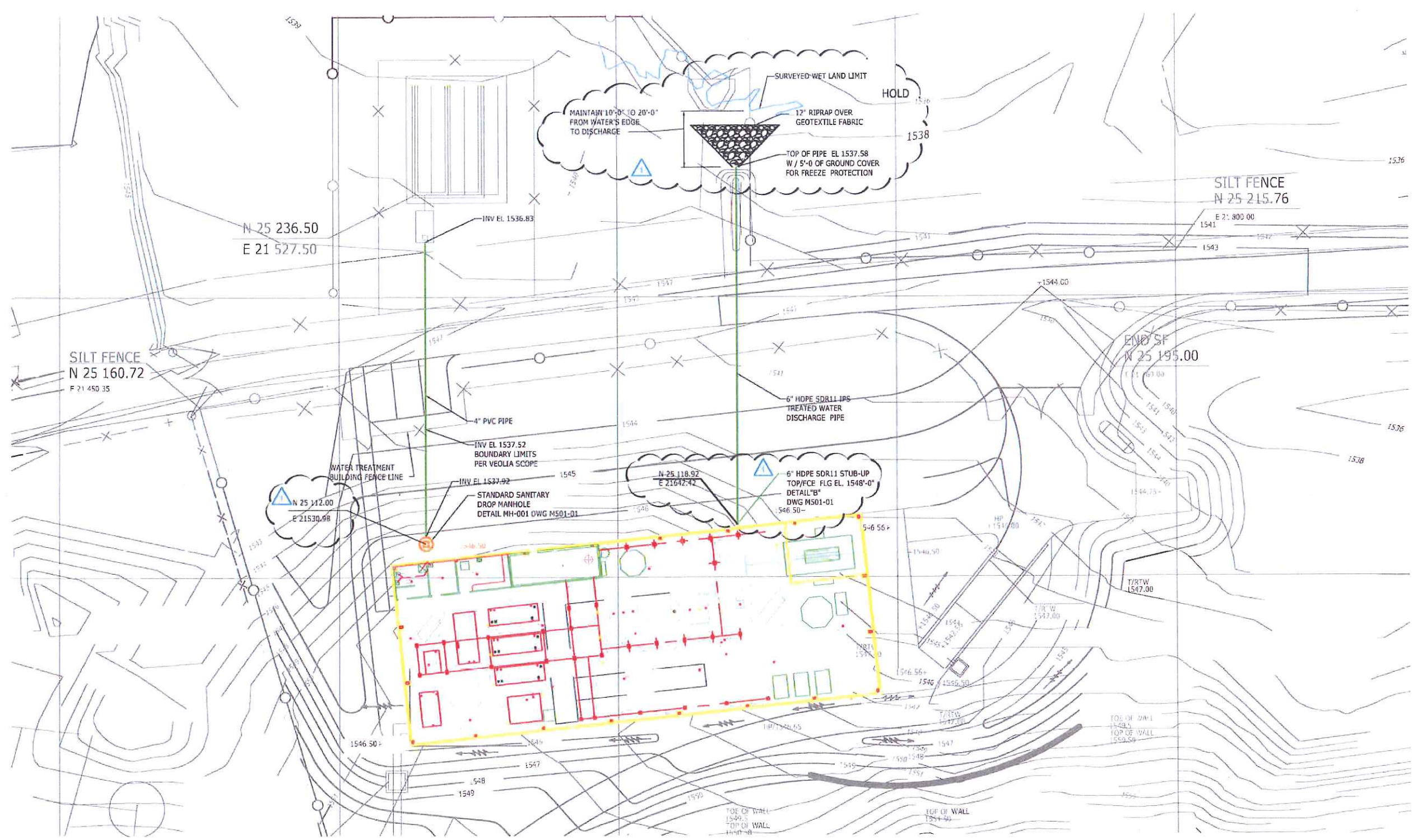
Attachment to Mass Balance Diagram FB-13002-01
Process Flow Rates and Chemical Feed Points

Node	1	2	3	4	5	6	7	8	9	10	11	12	13	14
Approx Flow Rate, gpm	1000	1000	1193	1140	1337	1337	64	1000	88	53	53	53	53	53
	Tailings Water	Bioreactor Effluent	Reaction Tank Effluent	Clarified Water	UF Feed	UF Filtrate	UF Backwash	Treated Water	UF Backwash Recycle	Clarifier Sludge Waste	Clarifier Sludge recycle	Thickener Decant	Waste Recycle	Press Filtrate

Equipment Code	Description
650-TK-207	Biological Fluidized Bed Reactor (not installed, but designed if needed)
650-TK-201	Coagulation/Reaction Tank
650-EQ-201	Lamella Clarifier
650-TK-202	Clarified Water Tank
650-UF-201 A/B/C	Ultrafiltration Units
650-TK-204	UF Filtrate or Backwash Supply Tank
650-TK-205	UF Waste Neutralization Tank
650-TK-603	Clarified Waste Sludge Tank
650-FP-201	Plate & Frame Filter press

Node	Chemical Feed
2	Ferric Chloride
	Sodium Hydroxide
3	Hydrex 6909
	Polymer (emulsion)
4	Ferric Chloride
	Hydrochloric Acid
6	Sodium Hydroxide (For neutralization prior to discharge)
7	Sodium Hypochlorite (For backwash preparation only)
10	Sodium Bisulfite
	Polymer (emulsion)

DRAFT



REV. NO.	ISSUE DATE	DESCRIPTION	DESIGNED BY	CHECKED BY	IN CHARGE	APPROVED BY
2	11-26-13	EAB				
1	10-2-13	RP	JML	DD		
0	8-26-13	RP	PPR	DD		

VEOLIA
Solutions & Technologies

NEW DWG # PER CUSTOMER
REVISED FOR CONSTRUCTION
ISSUED FOR CONSTRUCTION

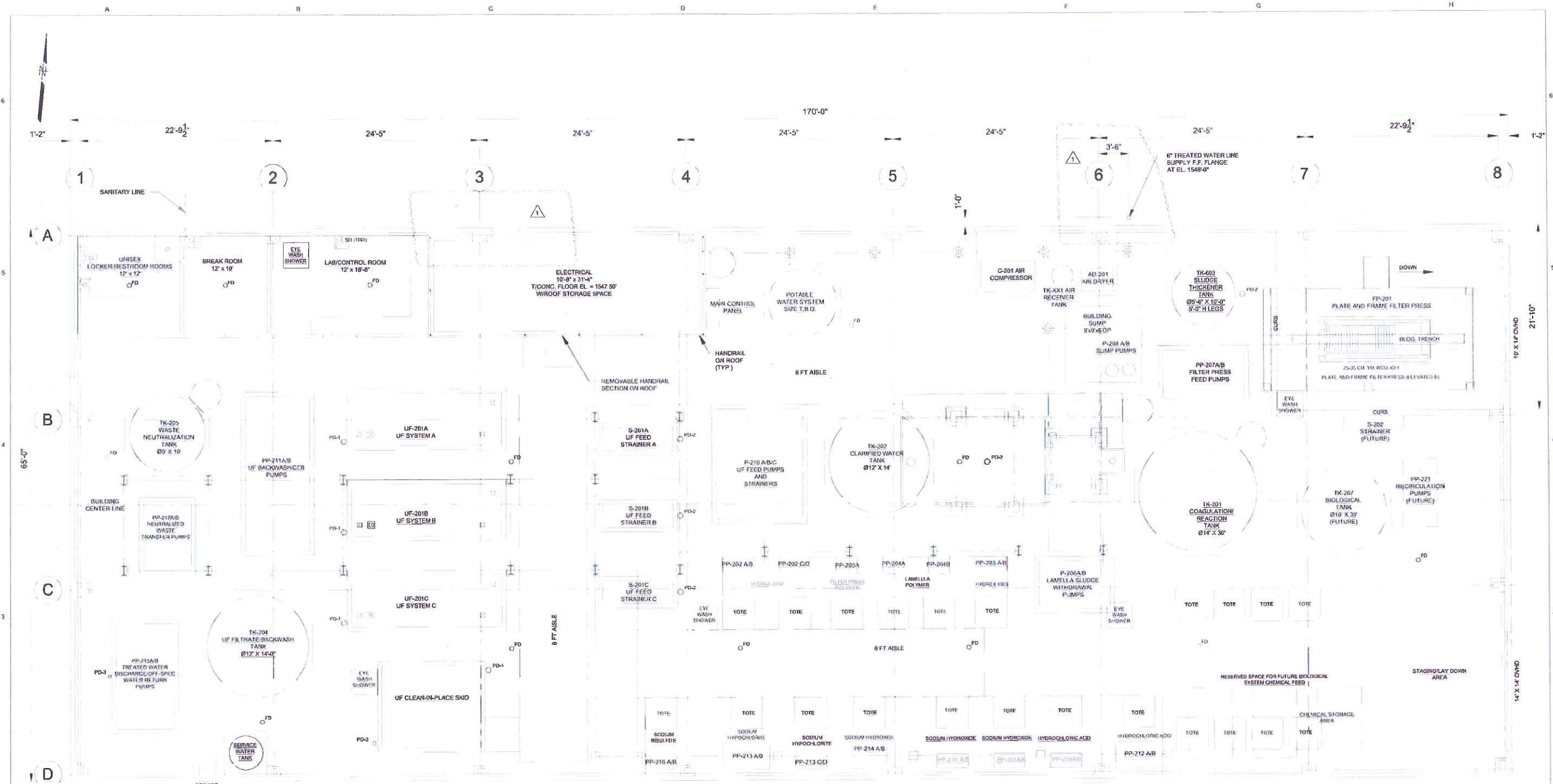
SCALE: 1/16"=1'-0"

TITLE: EAGLE MINE
**EAGLE DEVELOPMENT PROJECT
WATER TREATMENT BUILDING
BUILDING UTILITIES
PLAN**

CONTRACT NO: 5600213015
DWG NO: M110-01
REV: 2

ALL INFORMATION CONTAINED ON THIS DOCUMENT IS THE PROPERTY OF VEOLIA WATER SOLUTIONS & TECHNOLOGIES. THE DESIGN CONCEPTS AND INFORMATION CONTAINED HEREIN ARE PROPRIETARY TO VEOLIA WATER AND ARE SUBMITTED IN CONFIDENCE. THEY ARE NOT TO BE REPRODUCED, COPIED, OR USED IN ANY MANNER WITHOUT THE EXPRESS WRITTEN CONSENT OF VEOLIA WATER. VEOLIA WATER ASSUMES NO RESPONSIBILITY OR LIABILITY FOR THE USE OF THIS DOCUMENT OR THE DESIGN CONCEPTS AND INFORMATION CONTAINED HEREIN FOR ANY OTHER PROJECTS, OR IN A MANNER THAT DOES NOT RELATE TO THE PROJECT OR PURPOSE OF THIS DOCUMENT. IN NO EVENT SHALL THIS DOCUMENT OR THE DESIGN CONCEPTS AND INFORMATION CONTAINED HEREIN BE USED IN ANY MANNER CONTRARY TO THE INTERESTS OF VEOLIA WATER. ALL PATENT RIGHTS ARE RESERVED. ACCEPTANCE OF THE QUALITY OF THIS DOCUMENT CONSTITUTES AGREEMENT TO THESE TERMS AND CONDITIONS.

DRAFT



LEGEND
 CO = CLEANOUT
 FD = FLOOR DRAIN
 SD = SINK DRAIN
 TBD = TO BE DETERMINED
 PD1 = PROCESS DRAIN 8" LINE WITH 8" CONCENTRIC REDUCER FUNNEL ABOVE FLOOR T/REDUCER FUNNEL EL. 1547'-9"
 PD2 = PROCESS DRAIN 4" LINE WITH 4" CONCENTRIC REDUCER FUNNEL ABOVE FLOOR T/ FUNNEL EL. 1547'-9"
 PD3 = PROCESS DRAIN 3" LINE WITH 3" CONCENTRIC REDUCER FUNNEL ABOVE FLOOR T/ FUNNEL EL. 1547'-9"

NOTE:
 1 ALL EQUIPMENT LABELS PRECEDED WITH 850-
 2 NOMINAL FLOOR EL = 1547' 00 UNLESS OTHERWISE NOTED
 3 BUILDING EAVE HEIGHT = 45'-6"

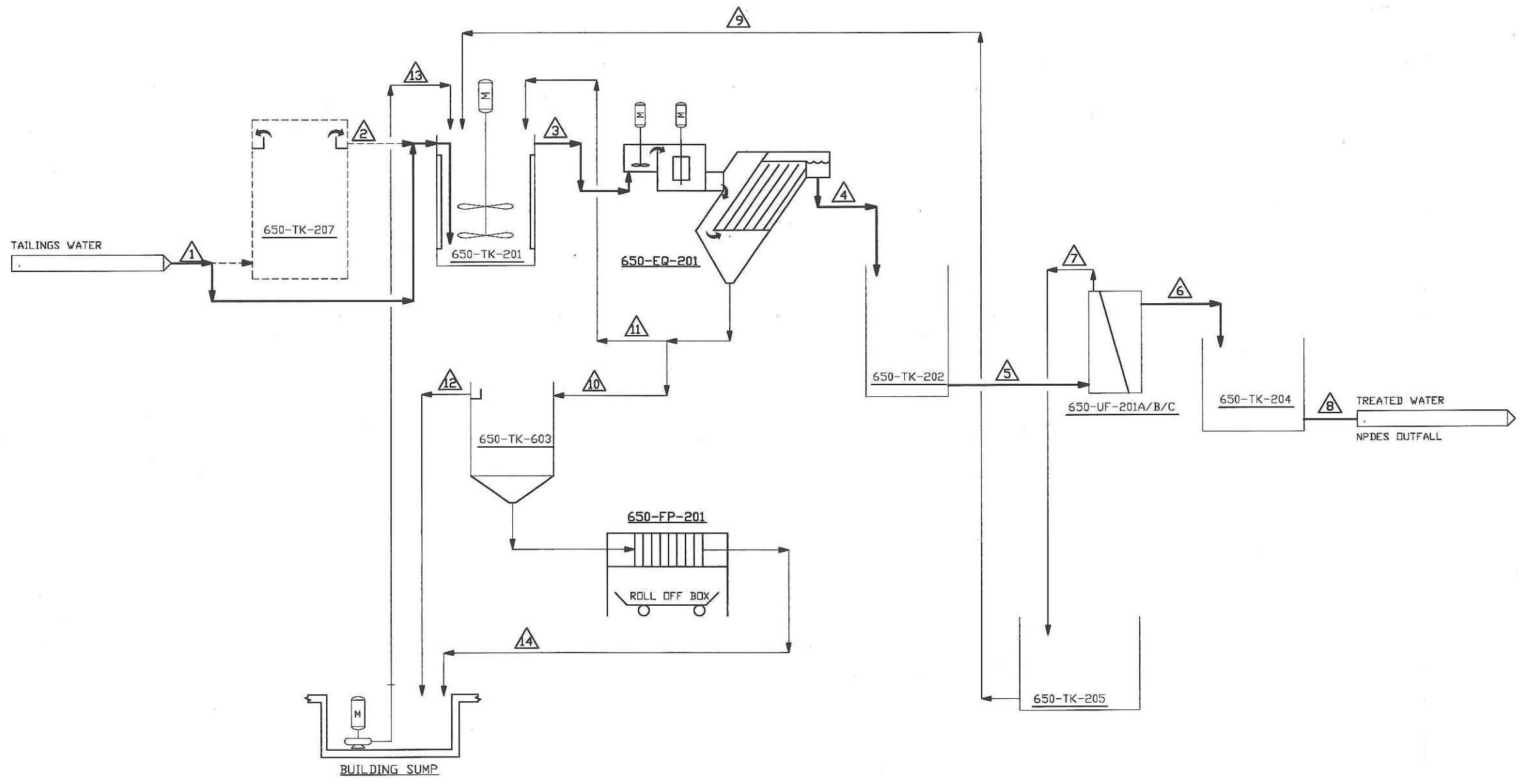


Solutions & Technologies
 1110 SHILOH SQUARE, SUITE 100, MOORE TOWNSHIP, PA 15120 USA, TEL: 1-412-261-4000

EAGLE MINE
 EAGLE PROJECT MILL WATER TREATMENT PLANT
 GENERAL BUILDING LAYOUT

REV. NO.	ISSUE DATE	BY	CHECKED BY	APPROVED BY	DATE

GENERAL NOTES



VANIPAPRIDS PROJECTS\13002 - KENNEDOTT MILL VTP\KEDOTT MILL VTP\KEDOTT MILL VTP\FB-13002-01.DWG



INDUSTRIAL SOLUTIONS AND SERVICES, WANDALIA, OHIO 45377, TEL. 1-800-875-0775

ALL INFORMATION CONTAINED ON THIS DOCUMENT IS THE PROPERTY OF VEOLIA WATER SOLUTIONS & TECHNOLOGIES. THE DESIGN CONCEPTS AND INFORMATION CONTAINED HEREIN ARE PROPRIETARY TO VEOLIA AND ARE SUBMITTED IN CONFIDENCE. THEY ARE NOT TRANSFERABLE AND MUST BE USED ONLY FOR THE PURPOSES FOR WHICH THE DOCUMENT IS EXPRESSLY SUBMITTED. THEY MUST NOT BE DISCLOSED, REPRODUCED, LOANED OR USED IN ANY OTHER MANNER WITHOUT THE EXPRESS WRITTEN CONSENT OF VEOLIA. VEOLIA ASSUMES NO RESPONSIBILITY OR LIABILITY FOR THE USE OF THIS DOCUMENT OR THE DESIGN CONCEPTS AND INFORMATION CONTAINED HEREIN FOR ANOTHER PROJECT, OR IN A MANNER THAT DOES NOT RELATE TO THE FITNESS OR PURPOSE OF THIS DOCUMENT. IN NO EVENT SHALL THIS DOCUMENT OR THE DESIGN CONCEPTS AND INFORMATION CONTAINED HEREIN BE USED IN ANY MANNER DEROGATORY TO THE INTEREST OF VEOLIA. ALL PATENT RIGHTS ARE RESERVED. ACCEPTANCE OF THE DELIVERY OF THIS DOCUMENT CONSTITUTES AGREEMENT TO THESE TERMS AND CONDITIONS.

PROJECT NUMBER	FINISHED GOOD NUMBER	DATE
13002	-	5/31/13
DRAWN BY		GLM

CLIENT: EAGLE MINE

PROJECT: MASS BALANCE DIAGRAM FOR MILL WATER TREATMENT PLANT

REV	ISSUE DATE	DRAWN BY	APPLICATIONS CHECKED BY	ELECTRICAL CHECKED BY	PROCESS DEPT CHECKED BY	APPROVED BY	DESCRIPTION
0	10-31-13	GLM	JAR	CHS	SP	MRH	ISSUED FOR CONSTRUCTION

DWG NO: FB-13002-01 SCALE: NA SHEET: 04 OF 45

DRAWINGS WITH ALPHA REVISIONS ARE PRELIMINARY AND SHALL NOT BE USED FOR MANUFACTURING.