

INDEPENDENT MONITORING

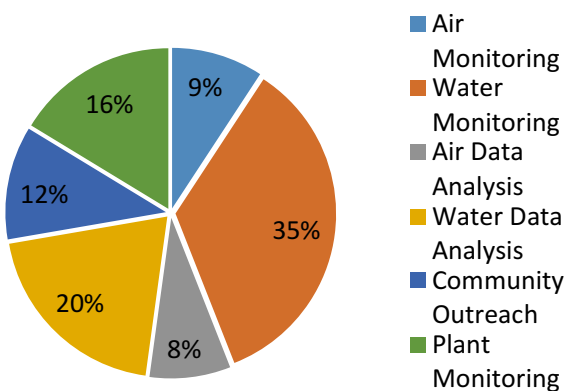
During July 2015, independent environmental monitoring of Eagle Mine's operations by the Superior Watershed Partnership (SWP) included split sampling, observation and review of data collected in and around the Eagle Mine and the Humboldt Mill. Monitoring included:

- Independent sampling and analysis of Eagle Mine's Water Treatment Plant effluent.
- Independent sampling and analysis of Humboldt Mill's Water Treatment Plant effluent.
- Continued air quality monitoring in Powell Township at the CEMP Air/Meteorological Station
- Stream monitoring took place at each stream crossing along the Haul Route from the Eagle Mine to the Humboldt Mill.
- Blueberries and blueberry plants were gathered near the mine and mill sites for metals analysis as part of the CEMP program's new Berry Contaminant Study.

FINDINGS/RESULTS

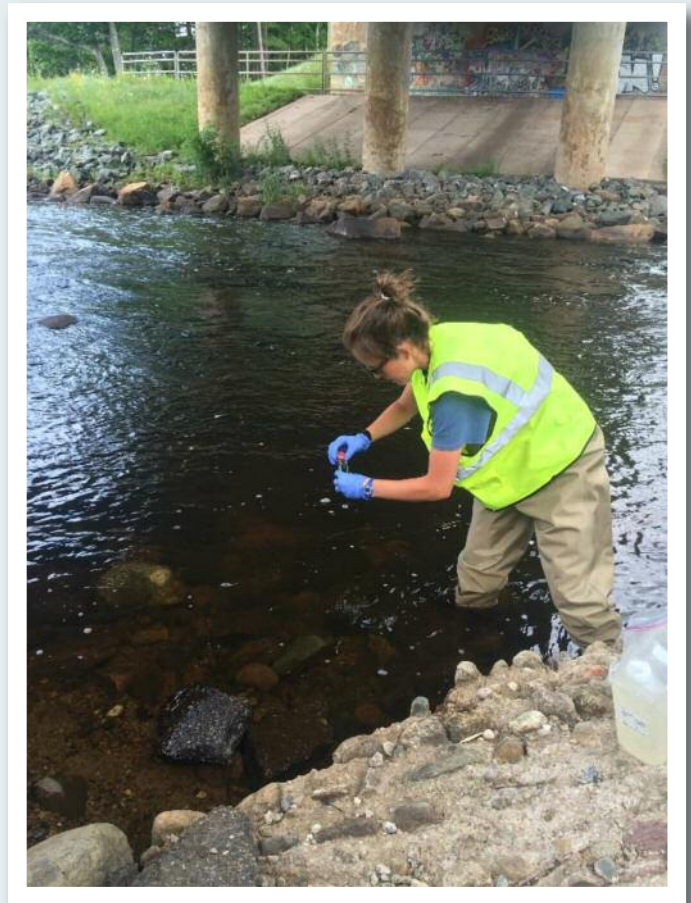
- An air quality and meteorological report was created from the Big Bay fixed air station for the month of July. Results can be found on the CEMP Data Portal.

**CEMP Monthly Monitoring by Category
July 2015**



PUBLIC OUTREACH/COMMUNITY INPUT

- SWP staff participated in CEMP technical and policy committee meetings.
- CEMP and Eagle Mine environmental monitoring data continues to be uploaded to the CEMP website. To view recently uploaded data visit the [CEMP Data Portal](#). Click [here](#) to view data from the Humboldt Mill.



CEMP Field Tech samples surface water from the Dead River along the haul route.